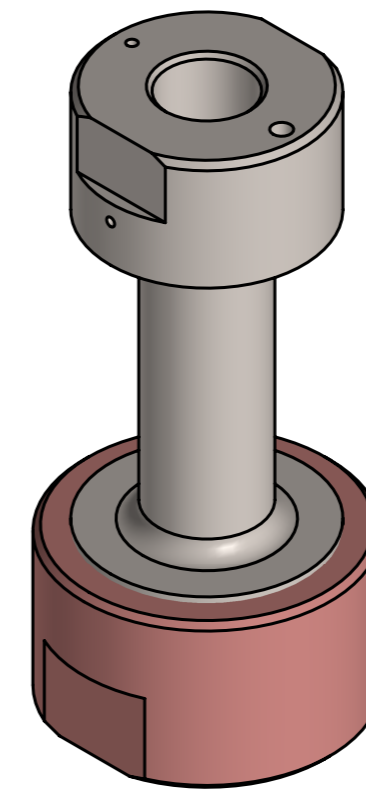


COUPE A-A



Pression maximale autorisée : 250 MPa
 Température max : 100 °C

Sample Volume:
 Empty = 6.3 mL
 With separator = 6 mL
 With ring insert = 0.3 mL
 With flat insert = 0.45 mL

Rep.	No.Plan	Ind.	Désignation	Matière	Qté	Observations
1	13PL-10-00-001	C	Cell Body TiZr	TiZr	1	
2	13PL-10-01-001	C	Insert a faces paralleles	EN AW-7049A	1	
3	13PL-10-03-001	A	Mushroom plug	CuBe2	1	
4	13PL-10-03-002	A	Hard anti-extrusion ring	Cu Al9 Ni3 Fe2 Mn	1	
5	13PL-10-03-003	A	Hard copper layer	Cu OFHC Cuc2	2	
6	13PL-10-03-004	A	Soft lead layer	Plomb 99.9%	1	
7	13PL-10-03-005	A	Backing Ring	CuBe2	1	
8	13PL-10-03-006	A	Closing washer	CuBe2	1	
9	13PL-10-03-007	A	Closing Nut	CuBe2	1	
10	13PL-10-03-008	A	Mushroom plug washer	CuBe2	1	
11	Visserie		Ecrou bas HM M 6	Inox	1	

D	21-11-16	J.Perez-Rios	J.Gonthier	E.Lelievre-Berna	Bridgman seal
C	28-04-15	J.Gonthier	C.Payre	E.Lelievre-Berna	Révisions rep. 1 et 2
B	23-01-15	J.Gonthier	C.Payre	E.Lelievre-Berna	Révisions rep. 2 et 3
A	09-01-15	J.Gonthier	C.Payre	E.Lelievre-Berna	Edition du plan
Ind.	Date	Dessinateur	Vérificateur	Resp.technique	Modifications

Tolérances générales:		Rugosité:	Matière:	Traitement:
Linéaires: x		x		
Angulaires: x		Masse:	Observations:	
		490.43 g		

Echelle:	<p>SANE - High Pressure 2.5 kbar liq. 13PL25TZ12 Insert Al a faces paralleles Assembly 2.5 kbar</p>	<p>INSTITUT LAUE LANGEVIN 6, rue Jules Horowitz - BP156 Grenoble Cedex 9 - France</p>
Format:		
A3	N° de plan	
	13PL-10-00-000	
Page: 1/1		Indice: D